

Date: Friday 15th January

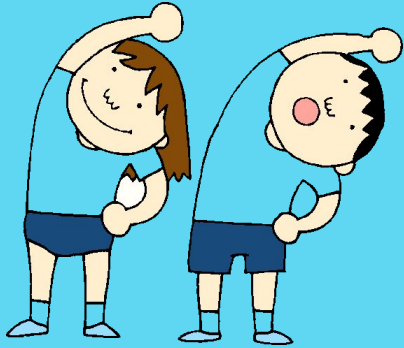
Title: Composition.



What colour is Tuesday?



Warming up the Word!



F

Something to eat or drink.



Flashback!

What is wrong with this sentence?



Solve

The trees were green and.

Prior Knowledge



Explain

What do we start a sentence with?

Prior Knowledge



Explain

What do we end a sentence with?



You follow a
treasure map
leading you to a
magical place.

Creating a setting.



Where is your
treasure map for?

Deep blue rivers.

Tall strong trees.

Beautiful purple flowers.

My setting plan:

Where is your story set?	Enchanted forest
What colour is the sky?	Purple
Are there trees?	Big green trees.
Are there animals?	No animals
Are there flowers?	Multi coloured flowers everywhere.

Using the plan from yesterday
write you setting description.

Can you write at least 5 sentences about your setting.
Challenge can you extend some of your sentences by using 'and'.